



Location

Distance from the airport: 9km.

The Sebel Playford is set in the heart of beautiful Adelaide, on the city's vibrant North Terrace, opposite the Convention Centre and City Casino. The Festival Theatre, Parliament House, central business district and major shopping and restaurant precinct are just minutes away.

Distinctive features

The boutique Sebel Playford Adelaide, offers the perfect blend of classical style and contemporary luxury. The hotel has created a stunning Art Nouveau ambience, with beautifully appointed guestrooms and suites, luxurious amenities and exquisite cuisine. The Playford Lounge Bar and Playford Restaurant provide a wonderful focal point for the hotel, and are locally renowned for their quality and unique atmosphere.

Accommodation

182 spacious guestrooms, studio and loft suites. Select either a luxurious guestroom or an individually appointed studio and loft suite, each with spa and separate living and dining areas.

Guestroom features and facilities

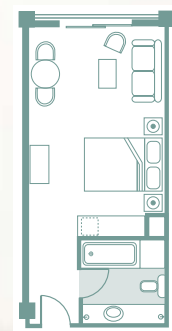
- A range of deluxe guestrooms and executive suites with kitchenette, separate lounge and balconies.
- Spacious with superior appointments
- Desk
- High speed broadband internet access
- Boutique teas, coffee and hot chocolate
- In-room movies
- Remote controlled television
- Alarm clock/radio
- Voice mail
- Non-smoking rooms and suites
- Personal bar with refrigerator
- Individually controlled air-conditioning
- Bathrobes and quality toiletries
- Iron and ironing board

Guest services

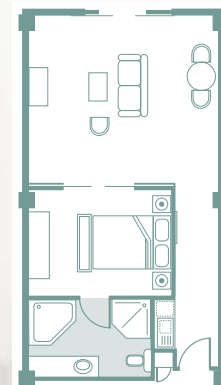
- 24-hour reception, concierge and room service
- 24-hour business centre
- Daily housekeeping service
- Valet dry-cleaning and laundry
- Fully serviced secure car park
- Foreign currency exchange
- High speed broadband and wireless internet access
- Tour and theatre bookings, airport limousine
- Disabled facilities and rooms

Guestroom and suite layouts

Playford Guestroom and Deluxe Guestroom average size - 29m²

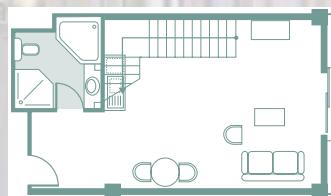


Studio Suite average size - 47m²

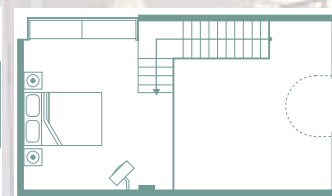


Loft Suite average size - 50m² - 62m²

lower level



upper level



Meetings in Adelaide

Adelaide is an ideal location for meetings, conferences, product launches and seminars. The city's grid layout, typified by wide boulevards, large public areas and ample parklands makes it easy and pleasant for delegates to move about. Excellent for pre and post conference activities, Adelaide has a number of major art festivals and is the gateway to a range of regional touring experiences, including the wine-growing areas of the Barossa, McLaren Vale, Clare Valley and Coonawarra, the adventure of the outback and unspoilt beauty of Kangaroo Island.

Meeting and function facilities

The Sebel Playford Adelaide offers meeting, seminar and conference facilities, all with natural light, for as few as 10 or up to 500 delegates with a choice of 10 variable space meeting room options, including a grand ballroom. This classically elegant setting is also perfect for chic cocktail occasions and magnificent weddings.

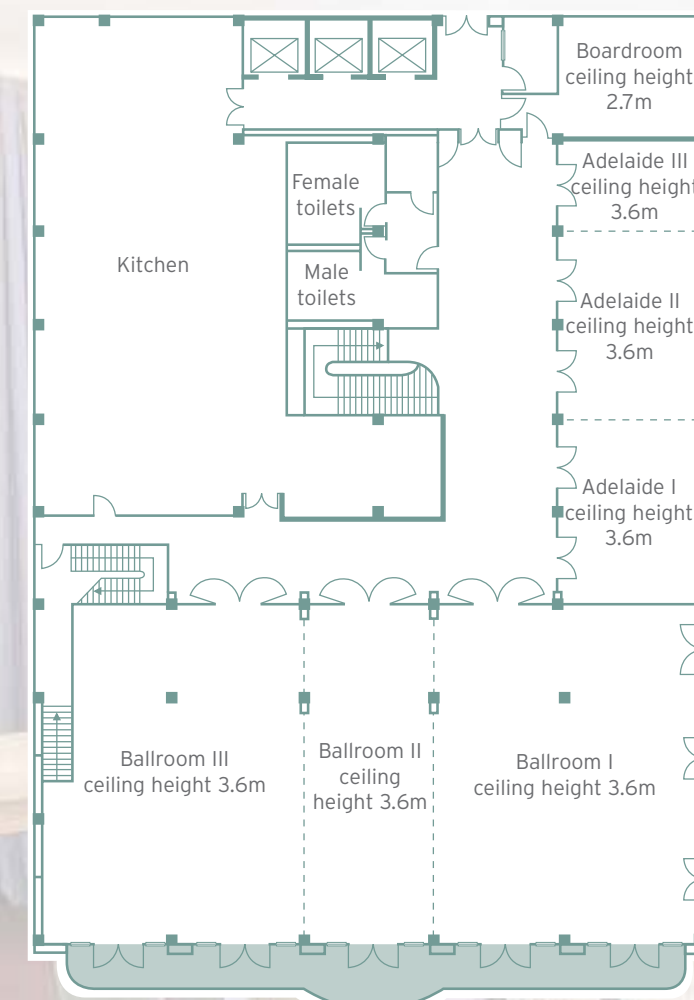
Conference room capacities

VENUE	THEATRE	CLASSROOM	U-SHAPE	BOARDROOM	CABARET	COCKTAIL	AREA METRES SQ
Ballroom	450	120	-	-	350	500	400
Ballroom I	150	45	30	40	140	200	160
Ballroom II	70	24	20	30	50	80	80
Ballroom III	130	45	30	40	130	180	160
Adelaide	95	30	-	-	80	100	120
Adelaide I	40	12	15	20	40	40	48
Adelaide II	40	12	15	20	40	40	48
Adelaide III	15	6	-	12	20	-	24
Boardroom	-	-	-	12	-	-	18

Services

- Meeting and function planning service
- Data projector and screen
- Whiteboard
- Flipchart
- Television and video
- Pads, pens, iced water and mints on table
- Additional audio visual equipment and presentation aids available on request

Conference room layout



120 North Terrace Adelaide

SA 5000 Australia

T 61 8 8213 8888

F 61 8 8213 8833

Free Call 1 800 885 888

Central Reservations 13 15 15

reservations@sebelplayford.com.au



Restaurant and bar

Playford Restaurant - The award-winning Playford Restaurant offers innovative world-class cuisine incorporating high quality South Australian ingredients and a renowned boutique wine list.

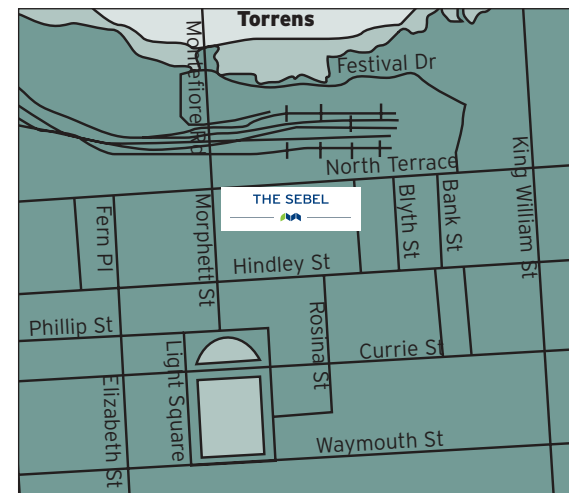
Playford Lounge Bar - Marvellous, warm ambience in stylish Art Nouveau surroundings, select from a varied bar menu and enjoy a drink with friends. The Playford Lounge Bar is tranquil by day and fascinating by night, with live entertainment available at weekends.

Recreation and fitness

- 24-hour fitness centre
- Indoor heated, Tuscan inspired, swimming pool
- Spa and sauna
- Fully equipped gymnasium
- Massage by appointment
- Nearby walking and jogging tracks

Nearby attractions

- City Casino
- Convention Centre
- Parliament House
- South Australia Museum
- Art Gallery of South Australia
- Botanic Gardens
- Rundle Mall shopping
- Adelaide Zoo
- Adelaide Markets
- Chinatown
- River Torrens Walking Trail
- Wine Regions: Barossa Valley, McLaren Vale, Clare Valley, Coonawarra
- Kangaroo Island



www.mirvachotels.com



Voted Best Luxury Hotel in South Australia 2001-2006.

Mirvac Hotels & Resorts

